



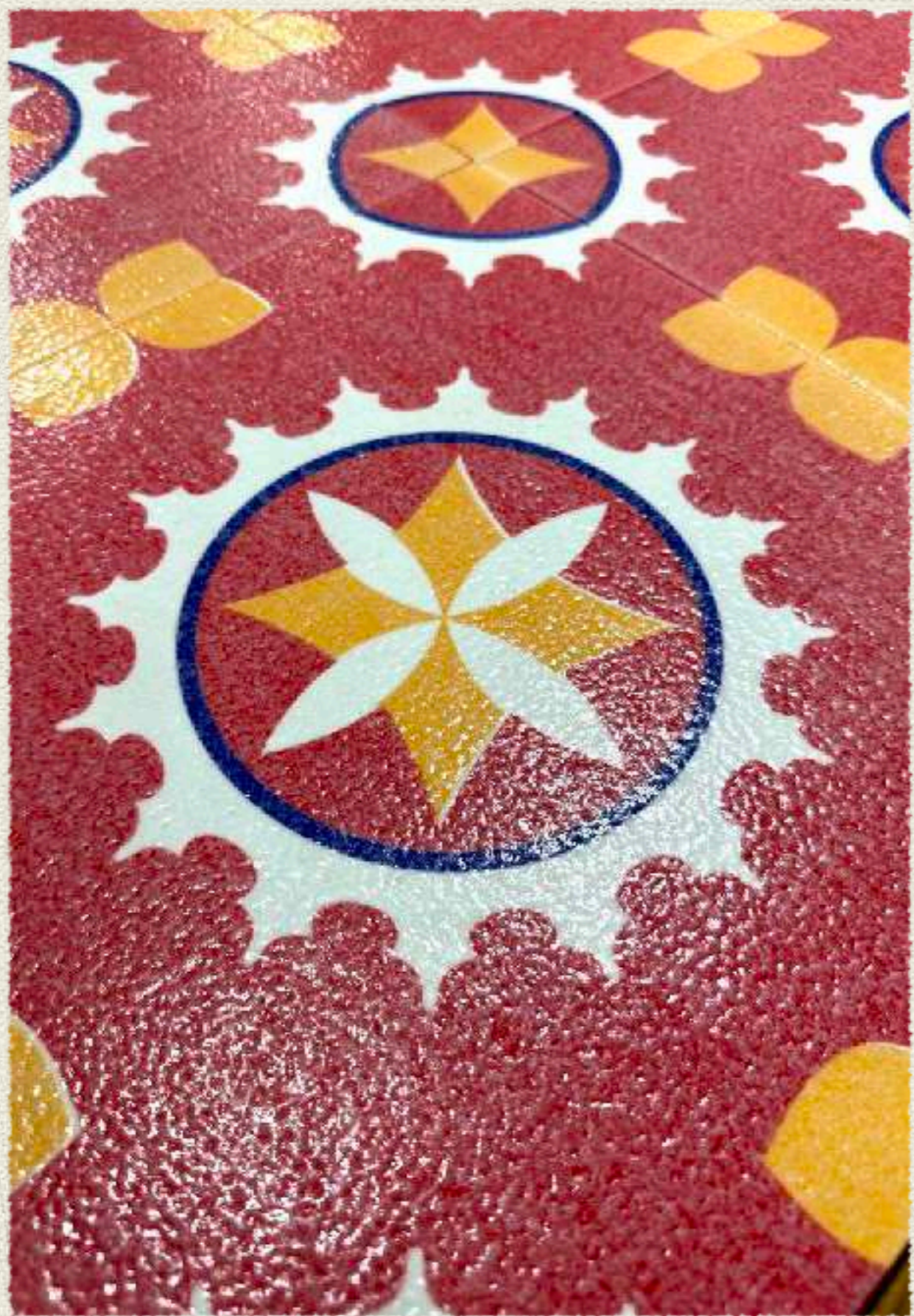
Decorative Tiles

by Keramos Tile & Stone

Dublin Series

Our most popular series and definitely the most versatile. Very hardy and durable. Matte finish. Ceramic & vitrified body. Suitable for walls and floors, as well as commercial applications with heavy footfalls.

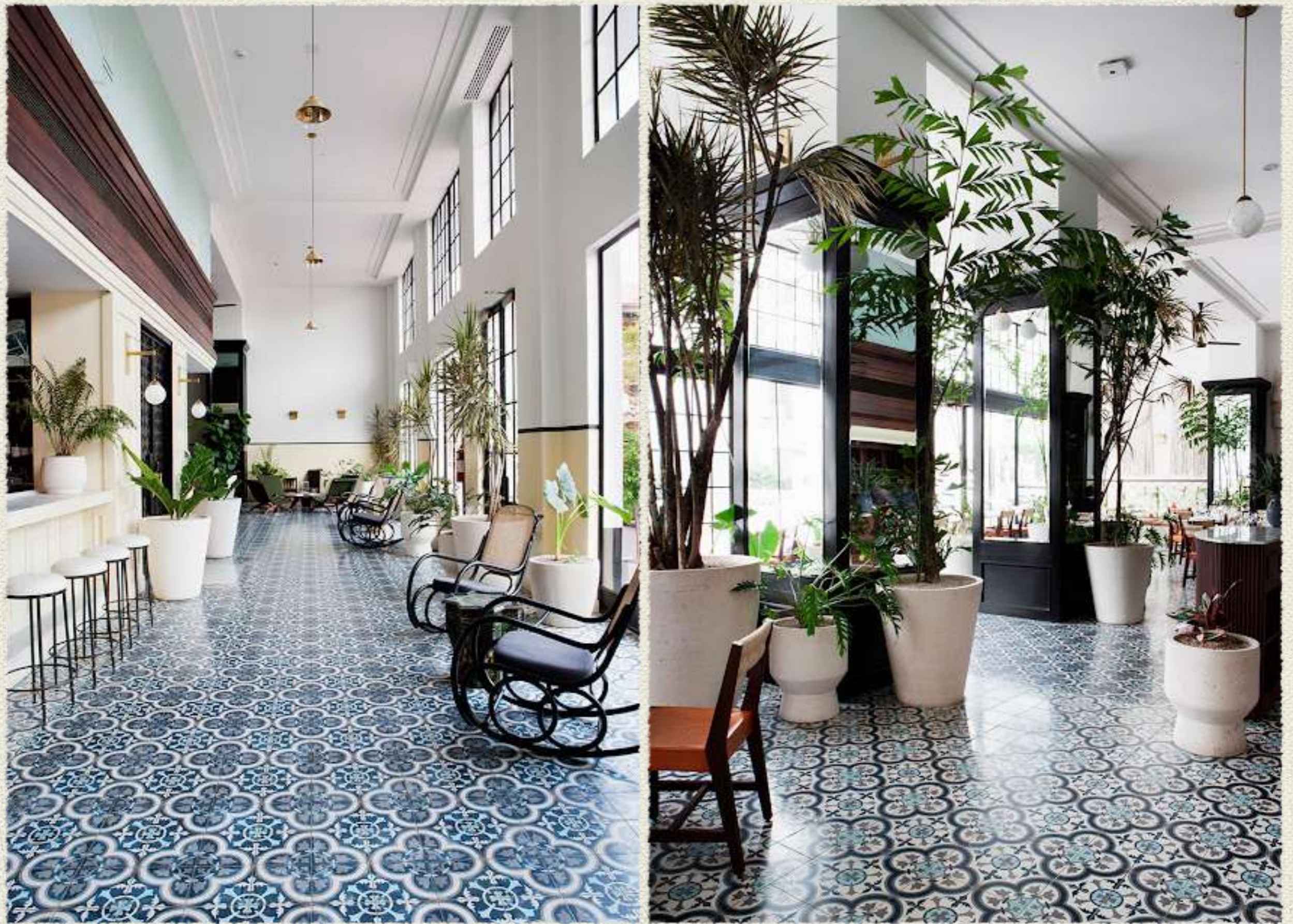










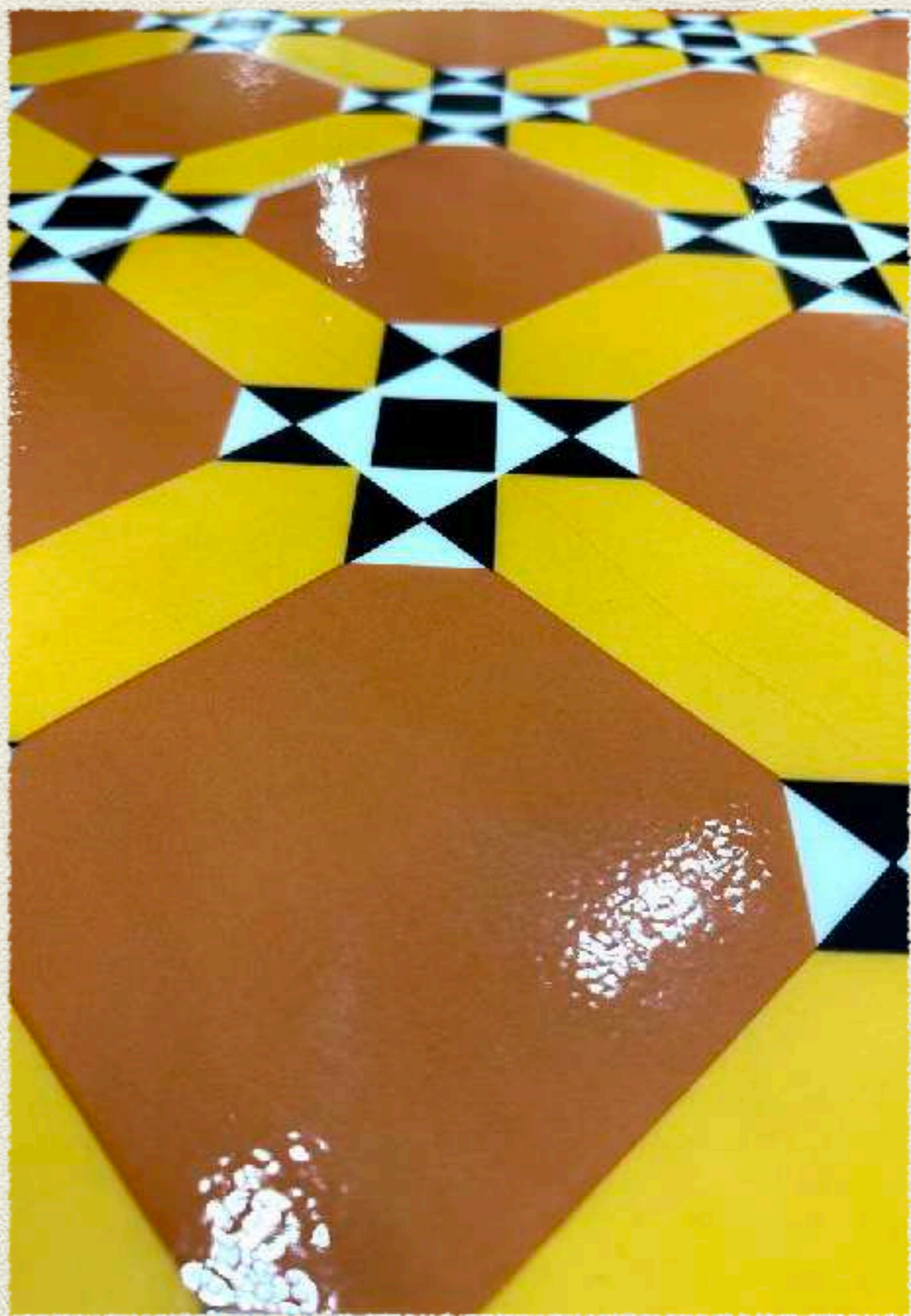


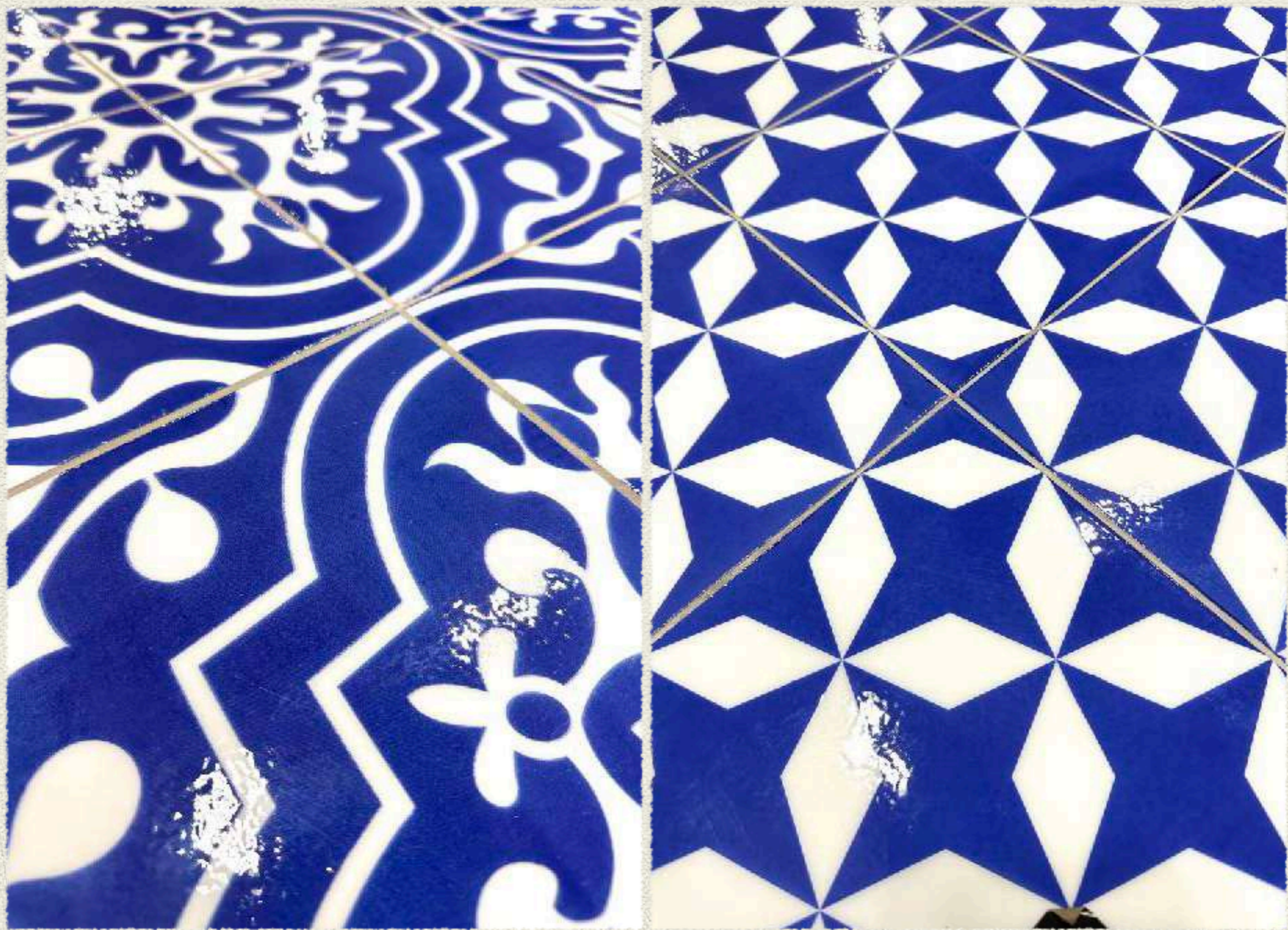


Luna Series

Similar to our Dublin series, Luna series has printed tiles with an extra glossy layer on top. But the surface is flat. Very hardy and durable. Ceramic & vitrified body. Suitable for walls and floors, but would be better used on the walls.













Rafael Series

Glossy Undulated Surface. Gives a really rich look and finish. Perfect for walls.

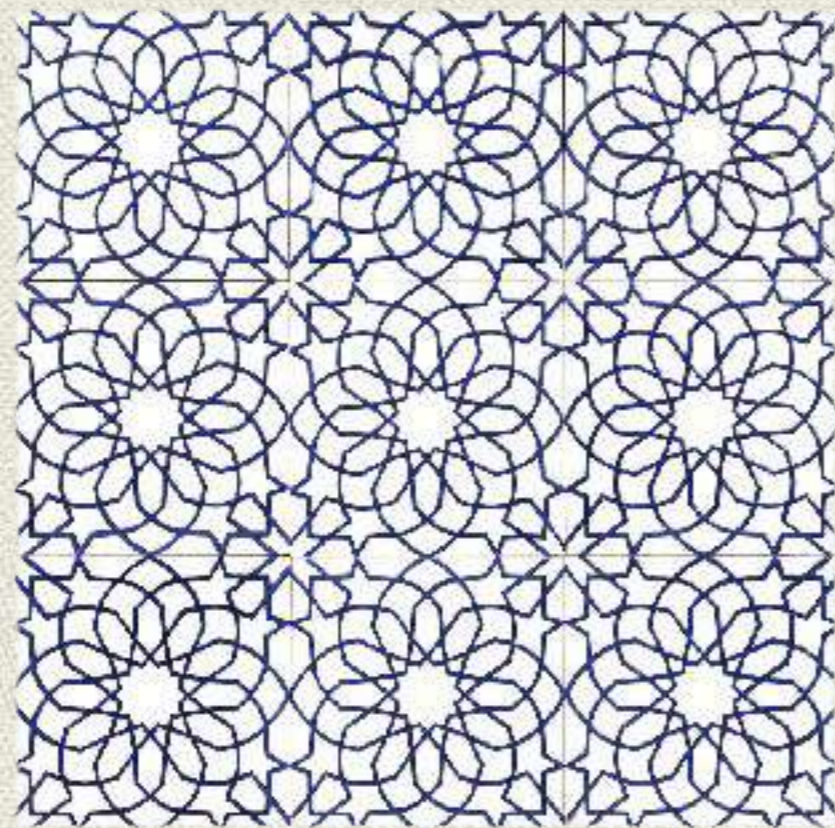
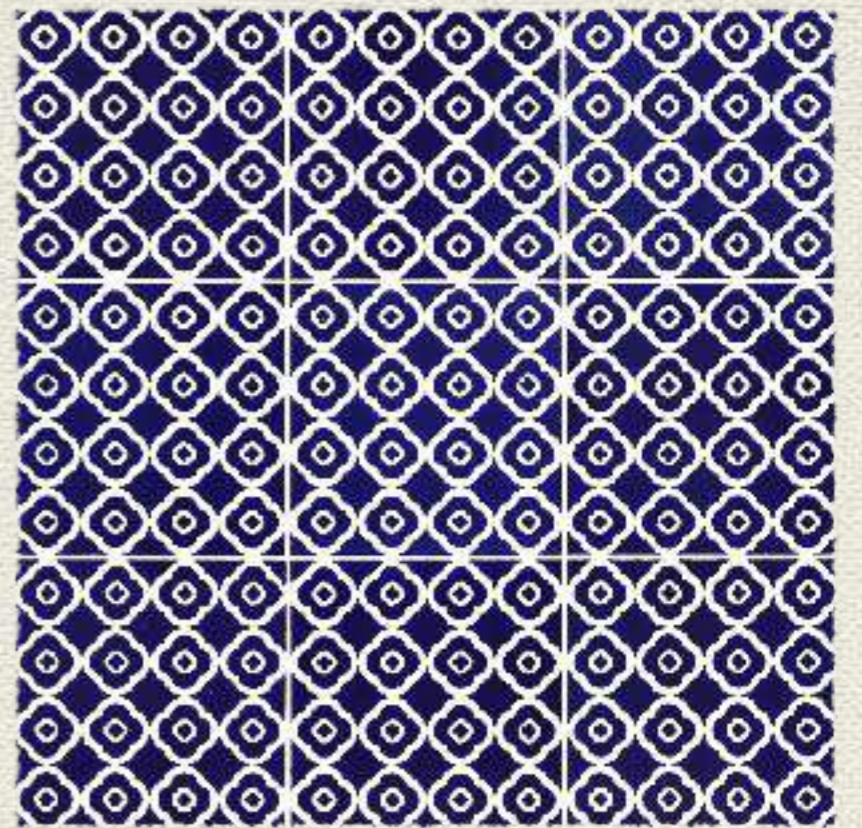
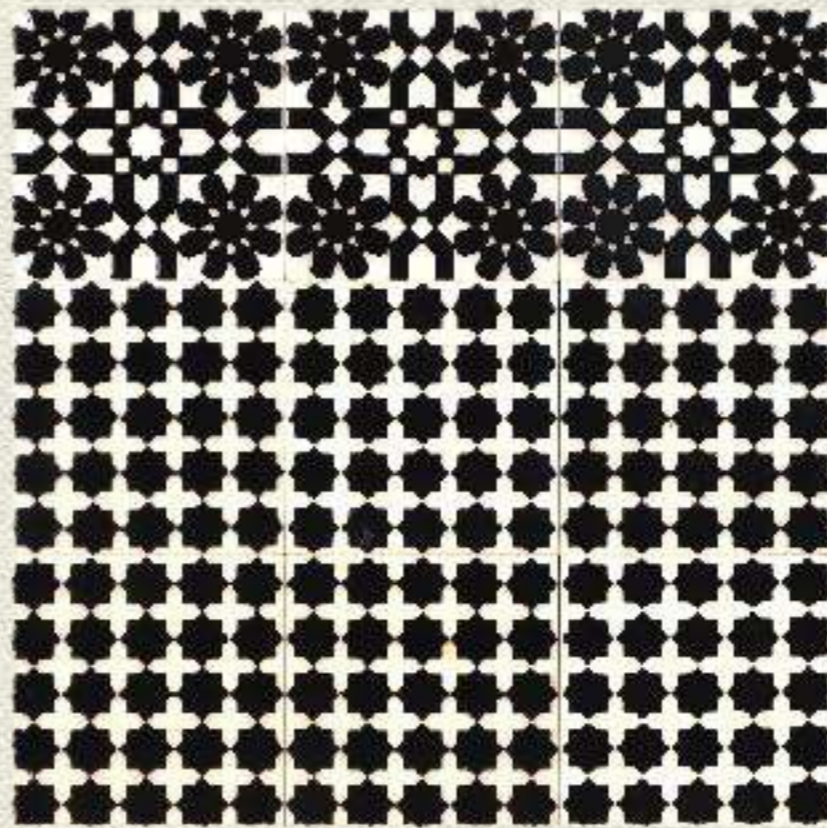
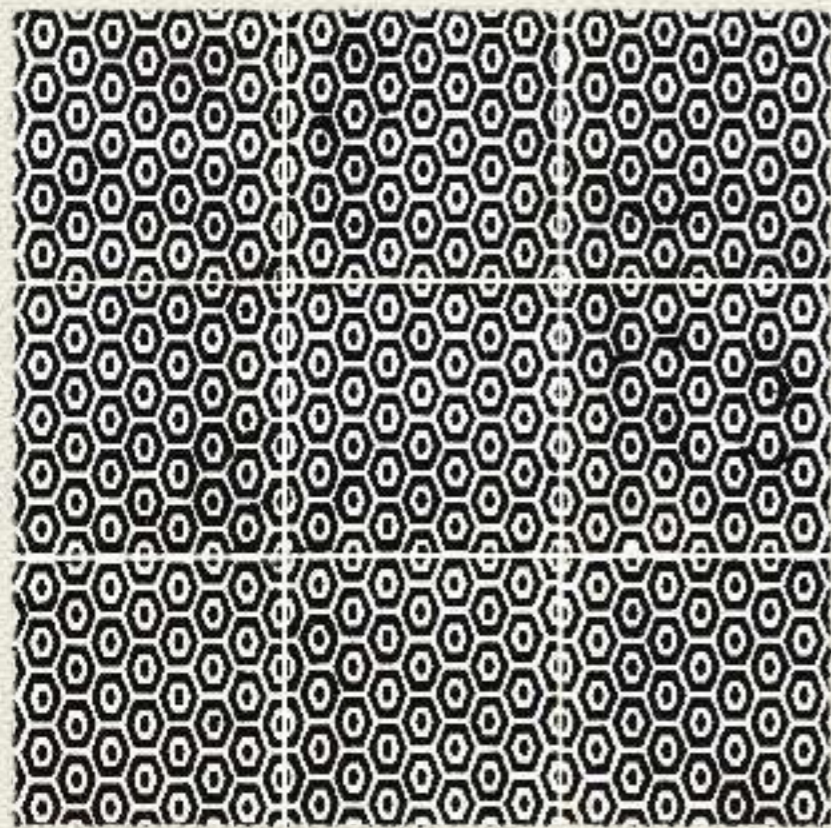










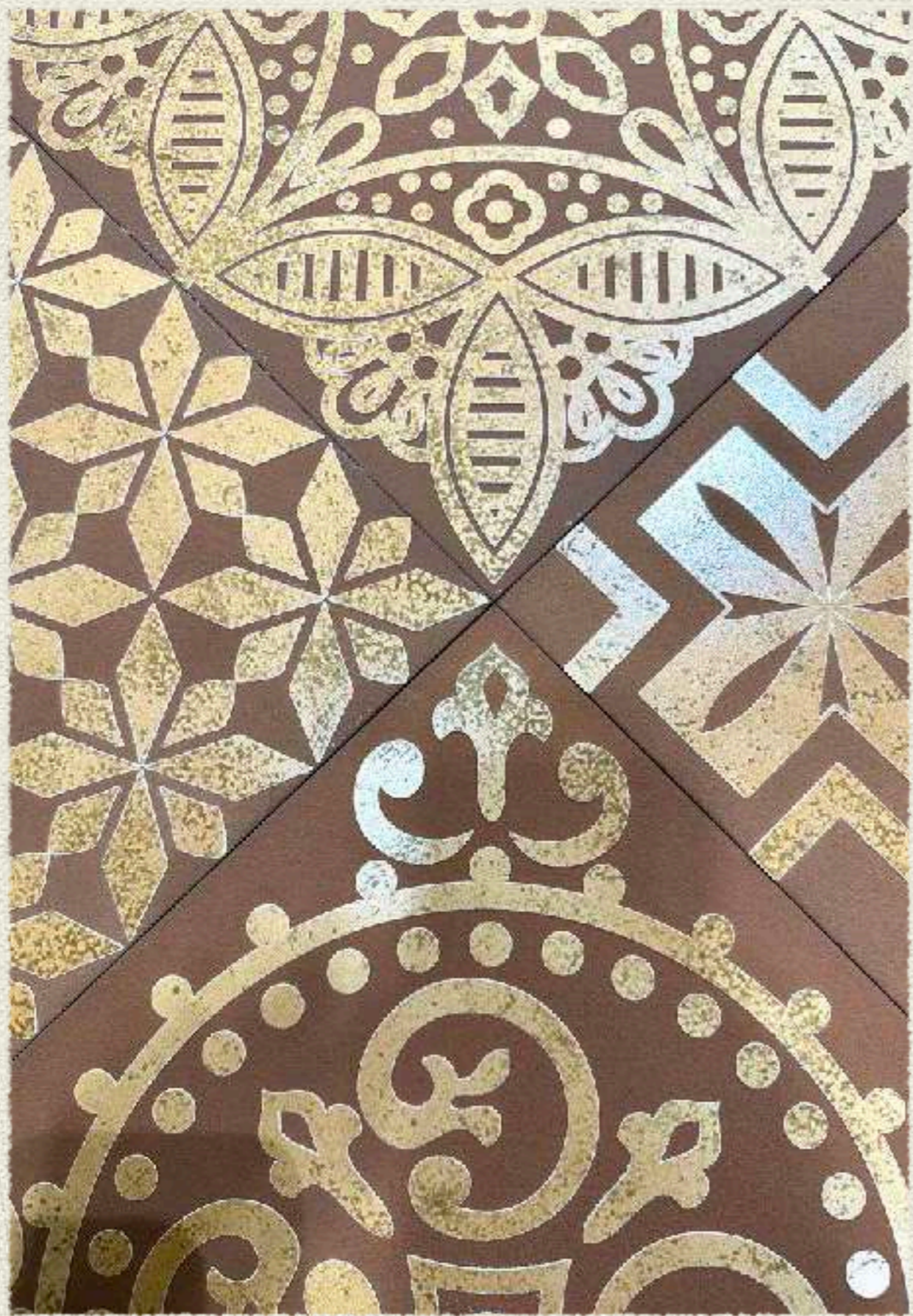


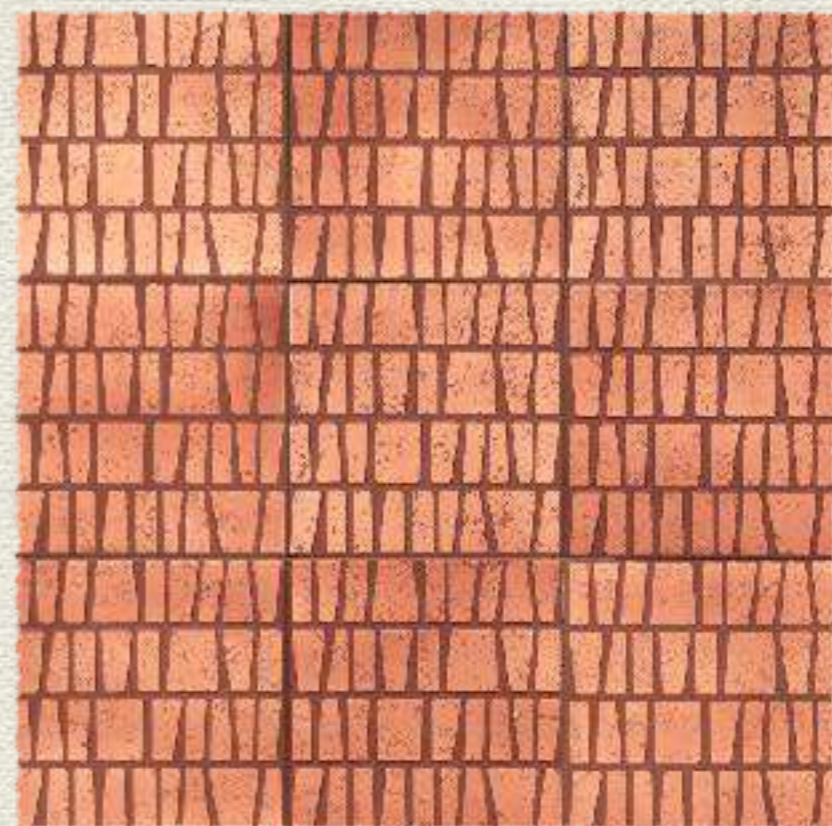
Simplon Series

Printed stencil on tile with an exposed tile body. This treatment gives the tile a very rustic look. Perfect for walls, especially in the outdoor.









Flextone Series

Printed tiles on a Hexagon Shaped ceramic body. Very versatile. Can be offered in Matte and Glossy. Great for wall and floor, even heavy applications











For further information please visit www.keramosindia.com

Keramos Tile & Stone Pvt. Ltd

F-580, Lado Sarai, New Delhi – 110 030, INDIA (Next to ShantiVijay Jewellers) , Tel : 011 46032765, 41665102,

Email: delhi@keramosindia.com, operations@keramosindia.com,

Contact: Ravindran 9810385142, R.Anand 09818663525